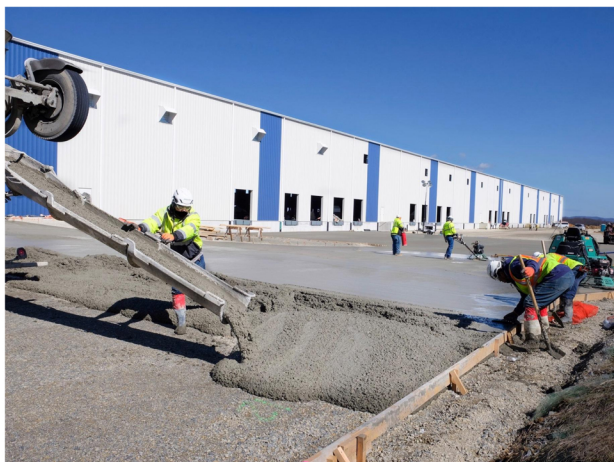


# PROCON

## PROJECT BRIEF



## The Patton Logistics Project

**Overview:** Distribution warehouse, site paving

**Project Location:** Dublin, VA

**Procon Scope of Work:** Concrete footings, piers, interior slabs, exterior concrete paving

**Owner:** The Patton Logistics Group

**GC/CM:** AVIS Construction Company

**Concrete:** 14,000 CY   **Rebar:** 75 T   **Building Size:** 351,000 SF